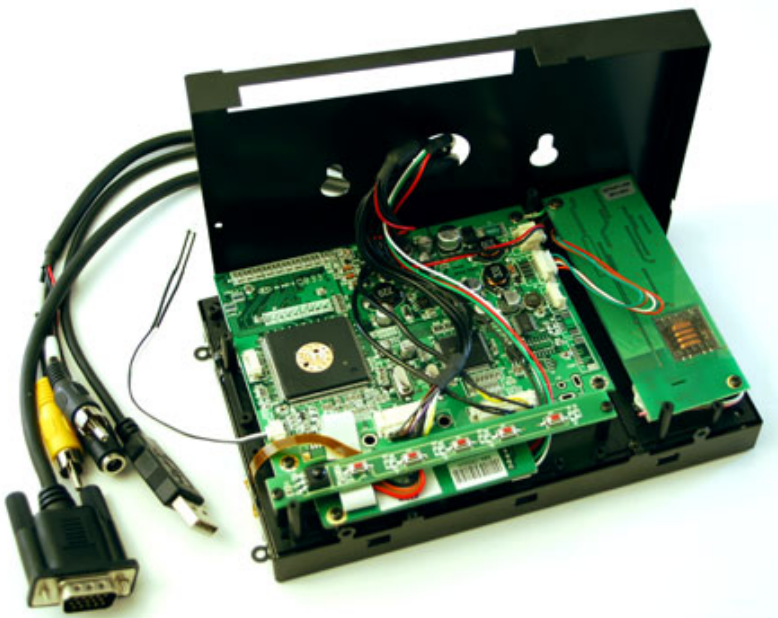





249.00 EUR  
incl. 19% VAT, plus [shipping](#)

- Open-Frame !
- Auto Power On !
- Auto-Dimmer !

CARTFT.COM



**Support:**  [Dimensions](#) | [800x480 Driver \(Windows 7\)](#)

**New :** LED-Backlight-Technology, with optimized color saturation enabling particular high and shining display. The scale of displayable color nuances is increased by 45% because of the new technology. Conventional LCDs are based on CCFL backlight, which can display approx. 72% of the standard color scale of NTSC (National Television Systems Committee). With LED-Backlight-Technology 104% of the NTSC-color scale can be displayed. This results in displaying in a highly realistic manner.

With the new Open-Frame TFT display-series from CarTFT you get back control : The ruggedized metal frame enables you a stable installation. The single modules (Mainboard, Touchscreen controller, Power inverter and button-frame) can be screwed off from the rear side and being positionated elsewhere. This way you can install the connector cables more easier and the display thickness shrinks also.

**Note :** This Open-Frame TFT display is an offer primarily meant for business and project customers. End consumers should only handle with unprotected electronic parts with appropriate experience.

**Possible additional options (starting from a MOQ of 20 units):**

- Speakers
- Different cable lengths
- Other display models/sizes
- Touchscreen RS232 instead of USB
- Other connector types
- [...] Ask us !

**Additional informations :**

With the touchscreen functionality you easily can control your PC. The brilliant VGA-display ensures a maximum readability and sharpness.

AC-Adapter for home usage and a car cigarette lighter adapter is included.

The CTF-400 can be used with any PC/MAC with VGA- and USB port.

Driver-CD included, compatible with :

- Windows 95/98/ME/NT4/2000/XP/7/8/8.1/10
- XP Tablet PC Edition
- Windows CE 2.12, 3.0, .net
- Linux RedHat,Mandrake,..
- Macintosh OS 9.x, 10.x
- DOS,..

| <b>Spezifications</b> |                          |
|-----------------------|--------------------------|
| Screen size           | 7" digital               |
| Aspect Ratio          | 16:9 wide TFT screen     |
| Dot Resolution        | 2400x480= 1,152,000 dots |
| Physical Resolution   | 800x480                  |
| Supported Resolutions | 640x480-1024x768         |
| Color configuration   | RGB stripe               |
| Brightness            | 500 nits                 |
| Contrast              | 500:1                    |
| Operating temperature | -30°C to 85°C            |
| Power input           | DC 9-30V                 |
| Power consumption     | max. 8W                  |

|                           |   |
|---------------------------|---|
| <i>Video system</i>       | 2x Video inputs (PAL/NTSC)<br>1x VGA input  |
| <i>Dimensions</i>         | 167 x 105.5 x 32.1 mm<br>Display : 155 x 88 mm  |
| <i>Video input signal</i> | 1.0Vp-p, composite video  |
| <i>Features</i>           | Full function OSD control (english)<br>Auto-Dimmer<br>Auto Power On/Off<br>Autodimmer |
| <i>What is included ?</i> | - 7" VGA Open-Frame Touchscreen TFT with Video-support                                |
|                           | - Power Adapter f. EU 230V  |
|                           | - Cigarette Lighter Adapter   |
|                           | - Touchscreen Driver-CD   |
|                           | - Manual  |



Displays with [True-800x480-Support](#) achieve a pixel accurate view at 800x480@70Hz